

**Family Academic
Socialization: What
Does It Mean and
Why Is It Now
Important?**

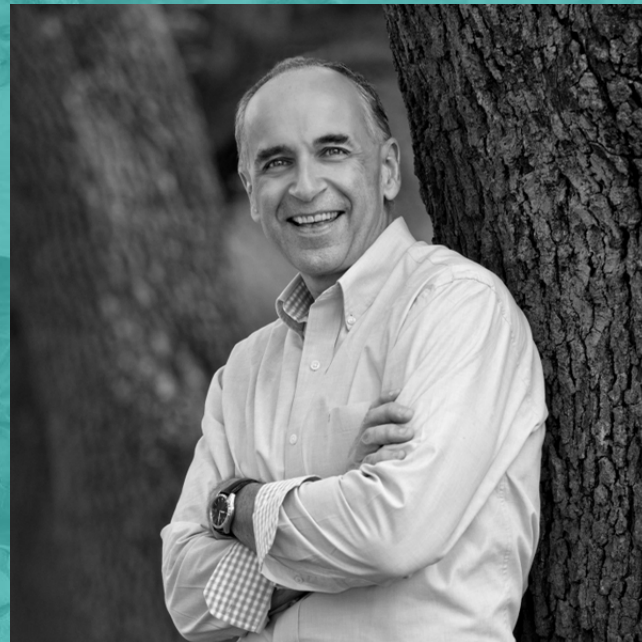
Presented by

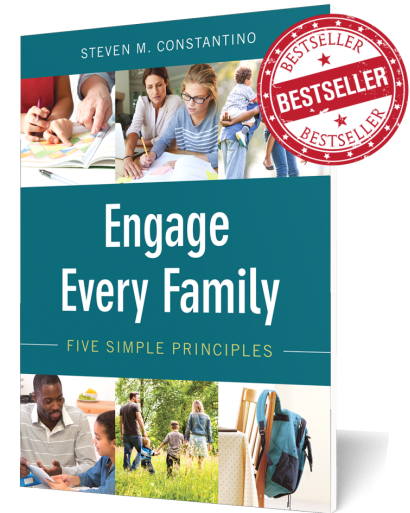
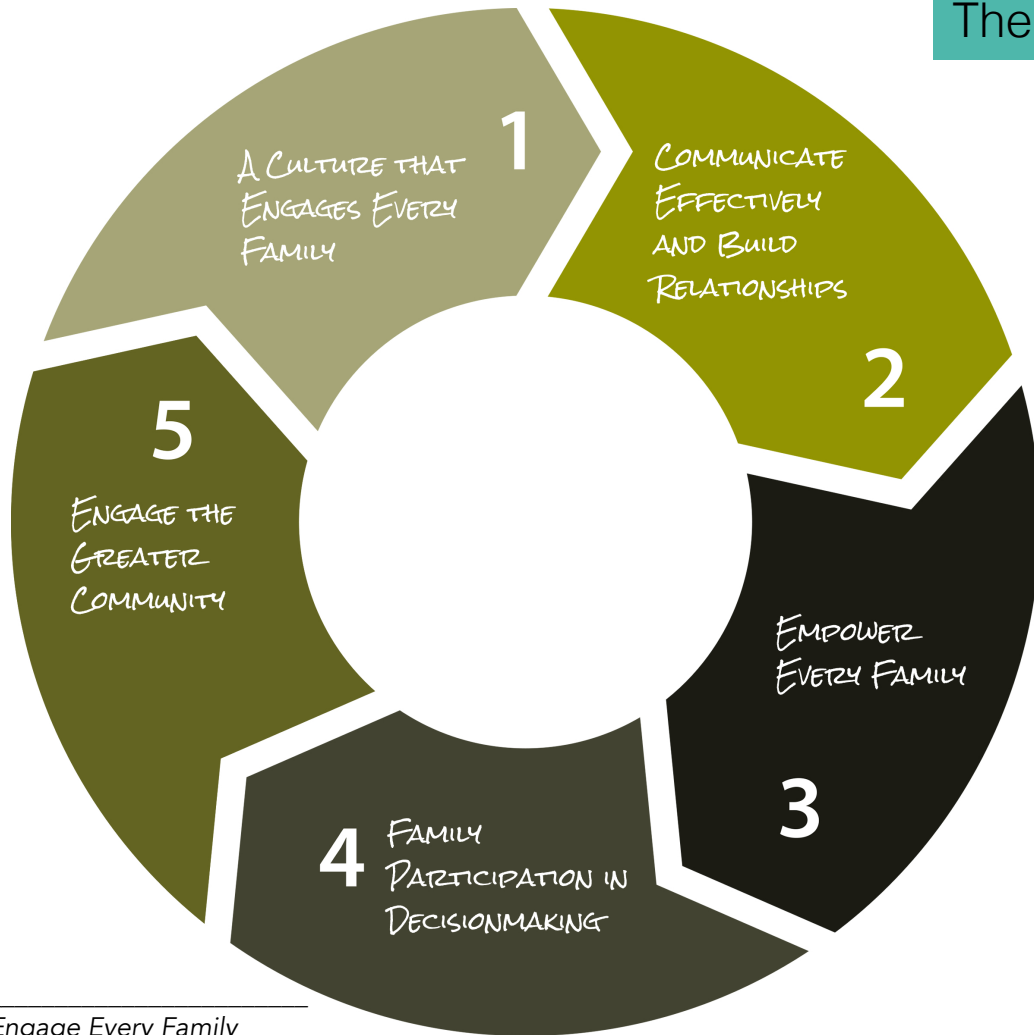
Dr. Steve Constantino
drsteveconstantino.com

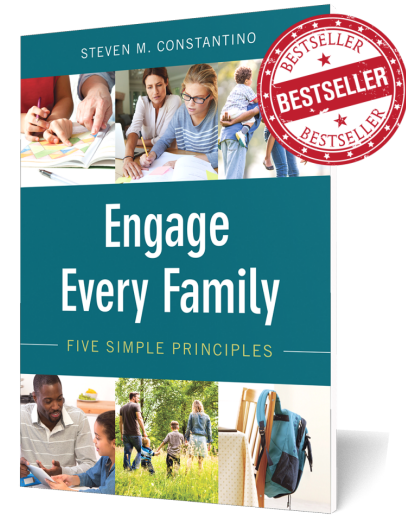


@drsconstantino

steve@drsteveconstantino.com



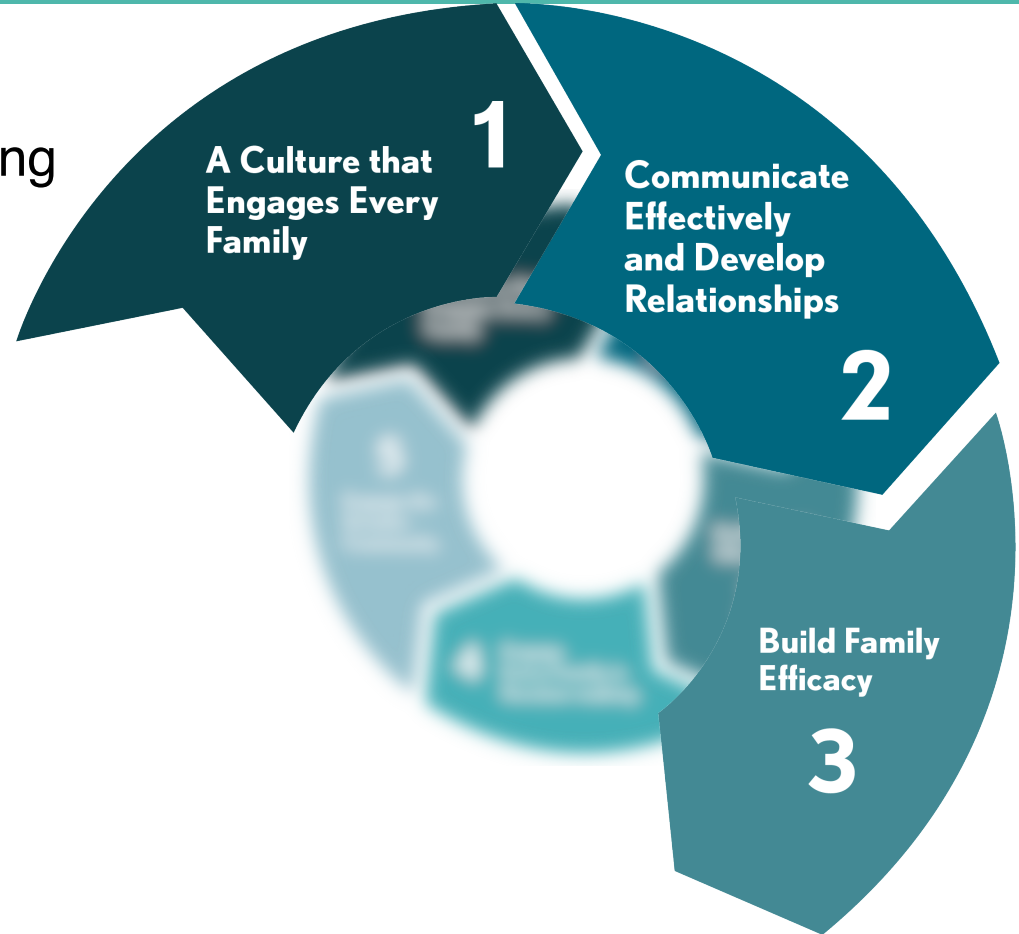




Watch for the 2nd Edition this Fall!

Principles #1, #2 & #3

- Beliefs and Values Regarding Family Engagement
- Two-Way Effective Communication
- Trust
- Family Efficacy



Six Considerations During Distance Learning

- Acknowledge the Contextual Changes in Learning
- Re-imagine the Pace of Learning
- Account for the Emotional Strain of Learning at Home
- Give Families an Active Role in Learning
- Consider the role of teacher shifting to coach
- The Landscape is Already Changed

How to Change the Course Toward Engagement

The percentage of families who are truly apathetic toward their children's education is:
(select one)

1. 10%

2. 7%

3. 1%

4. 19%

How to Change the Course Toward Engagement

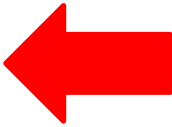
The percentage of families who are truly apathetic toward their children's education is:
(select one)

1. 10%

2. 7%

3. 1%

4. 19%



A Few Points to Ponder

- What do I think about family engagement?

A Few Points to Ponder

- What do I think about family engagement?
- Will family engagement work for me now?

A Few Points to Ponder

- What do I think about family engagement?
- Will family engagement work for me now?
- What is my role in promoting family engagement?

A Few Points to Ponder

- What do I think about family engagement?
- Will family engagement work for me now?
- What is my role in promoting family engagement?
- Am I willing to change what I think and do to promote better family engagement?

The Importance of Culture



Not among our
daily thoughts



Move through daily
routines in a similar
fashion, day after
day



Everyone can see
the same or
different nuances in
the culture of the
school



With cursory
attention, it seems
we are doing
“pretty good” with
our families



With a closer
examination, we
could see
something very
different.



The **7 Big** Ideas



1.

Families are the first and most influential teachers of their children.

Most schools are
adept at engaging
the already
engaged.

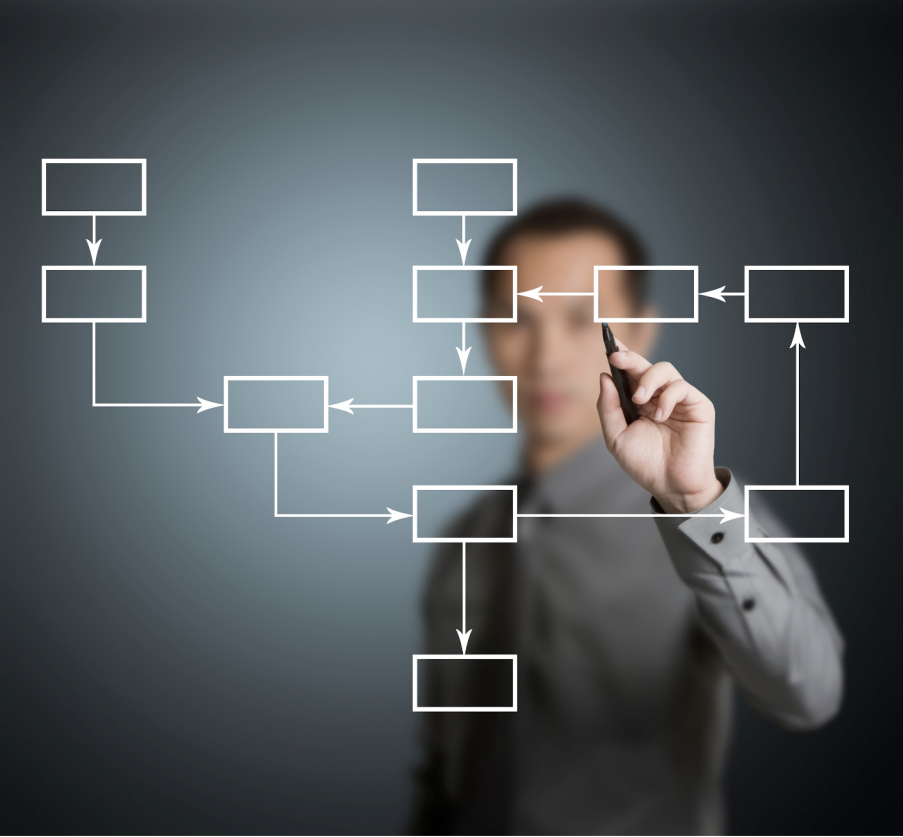
2.





3.

Family engagement is not about doing more,
but doing what we already do...*differently.*



4.

Family engagement is a
process.

Not an event.

Relationships with families that are disengaged must lead to increased family efficacy.

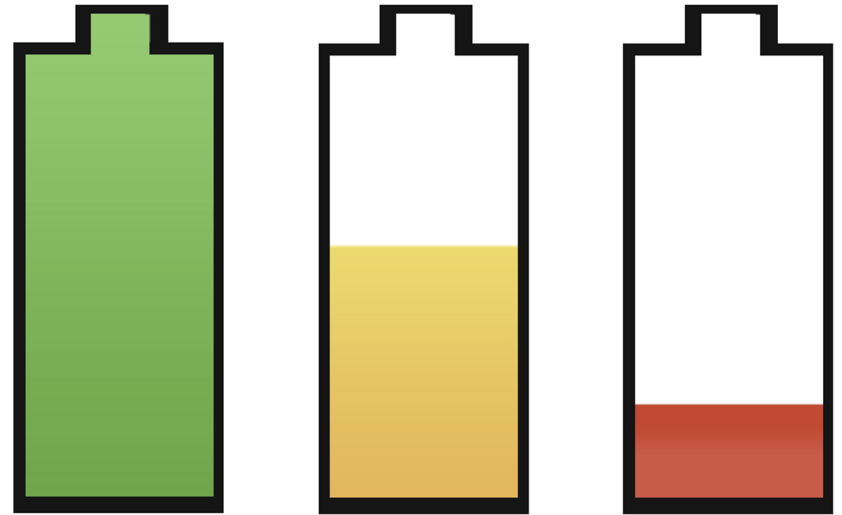


6.

There is a direct research correlation between underrepresented students and disengaged or disenfranchised families.

Without a process to build staff capacity to engage and promote family efficacy, the process cannot be sustained over time.

Engage Every Family



Efficacy = Empower

- **Efficacy is the power for one or many to produce an effect on a desired outcome.**
- **Families feel like they can contribute to the education of their children and make a positive difference in their child's educational outcomes**
- **They must believe, however, that their skills and abilities are suitable to making this happen.**



Efficacy = Empower

- **Empowered families, meaning families whose efficacy levels have been supported and improved, are more likely to be engaged with their children's educational experiences in a variety of ways, all of which support a healthy learning environment in school.**

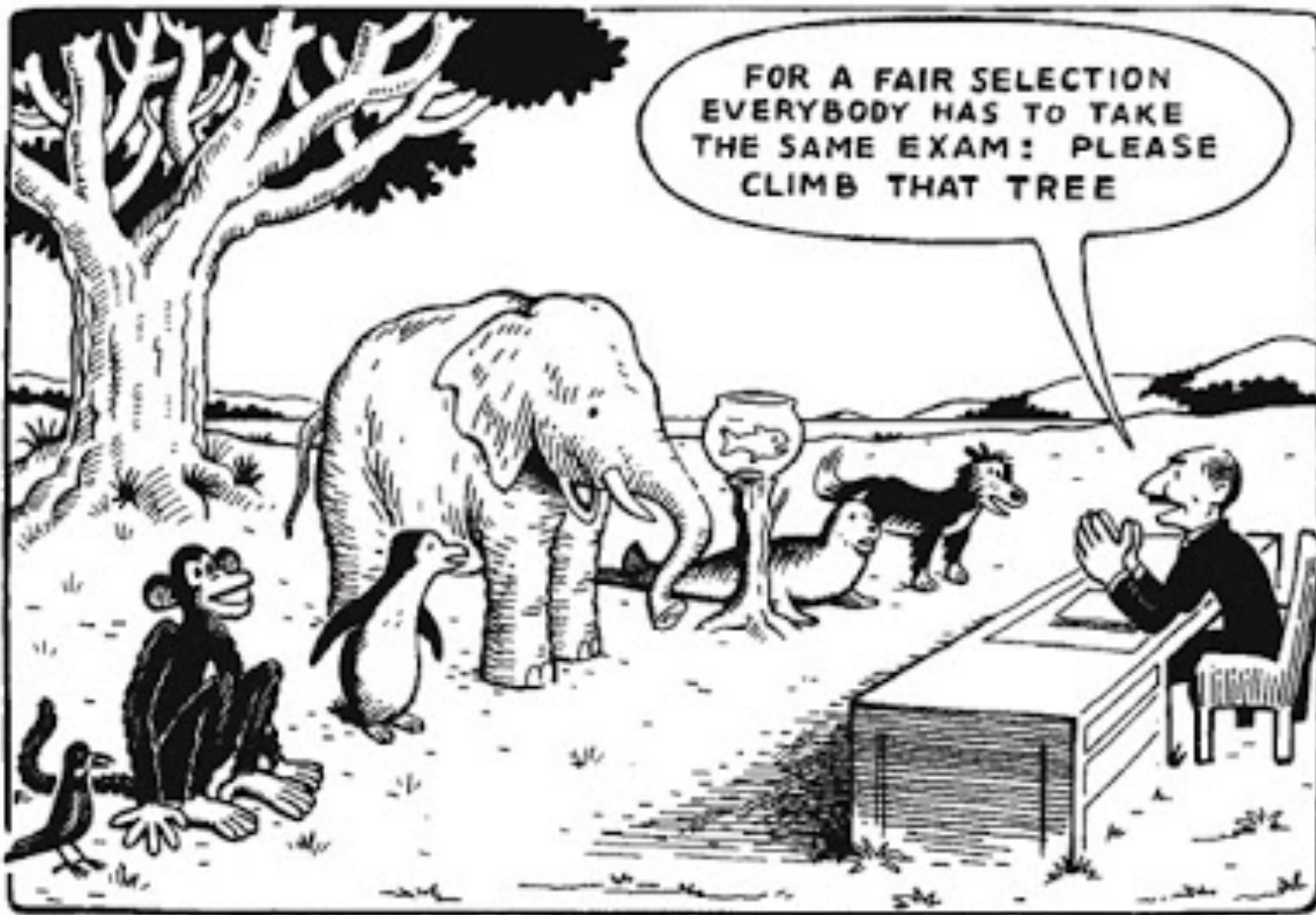


Socialization

- Learning and behaving with others in a manner that is acceptable.
- Internalizing norms and ideologies.
- Encompasses both learning and teaching.
- Socialization is strongly connected to developmental psychology.

Family Academic Socialization

- Academic socialization encompasses the variety of parental beliefs and behaviors that influence children's school-related development.
- Parents are the primary agents of child socialization.
- Children's academic attitudes are shaped by their families. The greater the family is invested and knowledgeable about their children's learning, the more likely children improve academically.
- Promoting family efficacy enhances family academic socialization.



THE TEST

Family Academic Socialization

- Family socialization shapes behaviors that have clear implications for student success or failure upon return to school.
- Authoritarian parenting is associated with maladaptive student learning outcomes. (Information, Compliance).
- Family understanding of their role in learning is associated with more positive learning and behavioral outcomes.
- Educators will not have the sole determination of the nature of children's transition back to school.

The Importance of Family Academic Socialization Amid the COVID-19 Emergency

For Your Consideration

Now, more than ever, family attitudes toward school and learning have a direct impact on whatever learning is to take place during this pandemic and more importantly what learning comes after. With teacher roles and influences significantly reduced, promoting partnerships in learning with families is critical in maintaining continuity of learning.

When schools reopen, the issue will not be how much learning took place, but rather, have student and family attitudes toward the importance of learning diminished? Filling in missed learning is far easier than re-socializing students and families to the importance of school and schoolwork.

Dr. Steve Constantino

How Can We Influence Family Academic Socialization?



Design Learning That is Inclusive of Families: The Efficacy Checklist

- ✓ Teacher encourages and welcomes the family in the learning process.
(Perception)
- ✓ Engages the family as a component of the planning and learning process not in a monitor or compliance role. (Motivation)
- ✓ Encourages dialog between the classroom teacher, family and student.
(Feedback)
- ✓ Families are not required to “learn” the lesson to have a role in the learning process. (Motivation)
- ✓ Connects learning with home learning environment, when feasible (Context)
- ✓ The learning experience empowers family participation. (Efficacy)

Other ideas

- Provide the context of learning; What does the learning lead to and why is it important?
- Solicit input from families about learning
- How families feel about the experience together with their own emotions, will drive positive or negative socialization. It is in our best interests to plan and work with them, not for them.
- Build relationships with families.
- Consider families as surrogate teachers and coach them to success.
- Move slowly. Relieve Stress.

References

- Baumrind, D. (1991). Effective parenting during the early adolescent transition. In P. A. Cowan & E. M. Hetherington (Eds.), *Family transitions* (pp. 111–164). Hillsdale, NJ: Erlbaum.
- Bradley, R. H. (1995). Environment and parenting. In M. H. Bornstein (Ed.), *Handbook of parenting: Vol. 2. Biology and ecology of parenting* (pp. 235-261). Mahwah, NJ: Erlbaum.
- Christian, K., Bachnan, H. J., & Morrison, F. J. (2001). Schooling and cognitive development. In R. J. Sternberg & E. L. Grigorenko (Eds.), *Environmental effects on cognitive abilities* (pp. 287–335). Mahwah, NJ: Erlbaum.
- Hetherington, E. M., Henderson, S. H., & Reiss, D. (1999). Adolescent siblings in stepfamilies: Family functioning and adolescent adjustment. *Monographs of the Society for Research in Child Development*, 64(4, Serial No. 259).
- Parker, F. L., Boak, A. Y., Griffin, K. W., Ripple, C., & Peay, L. (1999). Parent-child relationship, home learning environment, and school readiness. *School Psychology Review*, 28, 413–425.
- Taylor, L.C., Clayton, J.D. & Rowley, S.J. (2004). Academic socialization: Understanding parental influences on children’s school-related development in the early years. *Review of General Psychology*, 8(3), 163-178.

Thank You!

Send additional questions to:
steve@drsteveconstantino.com

Follow Dr. Constantino on Twitter:



@drsconstantino

Next week's webinar: **Stories from the Field: Successful Family Engagement During COVID-19**

4/28/2020. 2:00 p.m. EST



Sign up for our newsletter:
<https://drsteveconstantino.com/e-newsletter/>

