

# 3

## Ways You Can Boost At-Home Family Engagement

### 1 REMEMBER the Basics: Relationships first!

Mutual Trust

+

Cultural Responsiveness

+

Collaboration

=

Positive Learning Environment



### 2 BUILD and acknowledge family efficacy

Recognizing efforts & support

=

Families as co-creators of learning experiences

### 3 EMPATHIZE

Avoiding Assumptions

+

Flexibility

=



# AT- HOME LEARNING & FAMILY- SCHOOL PARTNERSHIPS



## ACKNOWLEDGE

### THE CHANGES IN LEARNING

The context for learning has dramatically changed: When designing lessons consider easy to implement lessons for at-home consumption

## KEEP IN MIND

### THE EMOTIONAL STRESS OF LEARNING AT HOME

Normalcy of school and family routines has changed. Focus on relationships, acknowledge family's fears and struggles, and open opportunities for feedback and suggestions



## GIVE FAMILIES

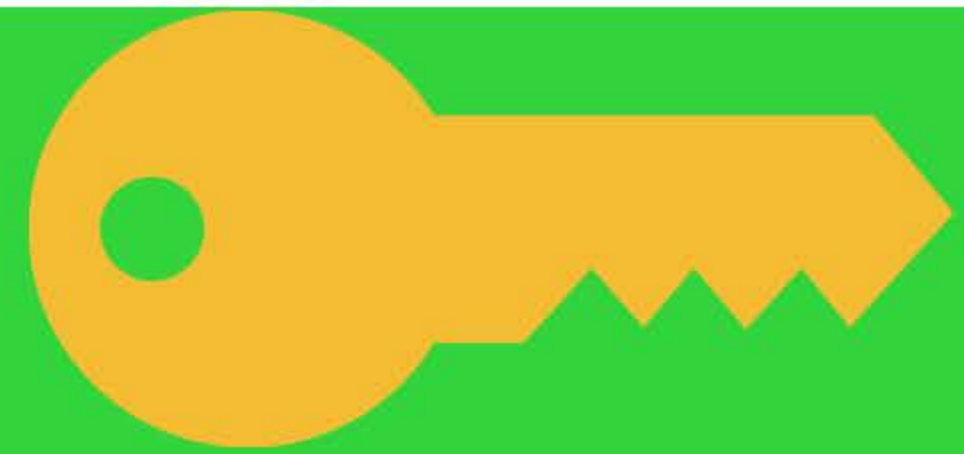
### AN ACTIVE ROLE IN LEARNING

Families are now delivering information and driving learning: Suggest resources and routines and celebrate success to build and strengthen family efficacy.



# SUPPORT FAMILY EFFICACY

Klein ISD Family Engagement



Family Efficacy: A  
key component for  
engagement

Family's decision to  
participate in learning is  
often based in potential  
outcomes:

"Can I help my student be  
successful?"



Families can :

**ENCOURAGE** learning  
**MODEL** learning  
**REINFORCE** learning  
**PARTICIPATE** in learning

Source:  
Dr. Steve Constanino



**Engagement** that you do not see, but of which **you will see** the results

**Promotes** the efficacy of families when they are with their children and we are not.



KLEIN ISD FAMILY ENGAGEMENT

# Invisible Engagement

**Support Invisible family engagement:**

- **Build** and sustaining relationships
- **Discover** Family's assets



**Support Invisible family engagement:**

- **Maintain** effective communication (Feedback)
- **Engage** family in the planning of learning experiences





# FAMILY ACADEMIC SOCIALIZATION

Klein ISD Family  
Engagement

Engagement that includes  
families communicating  
to students :

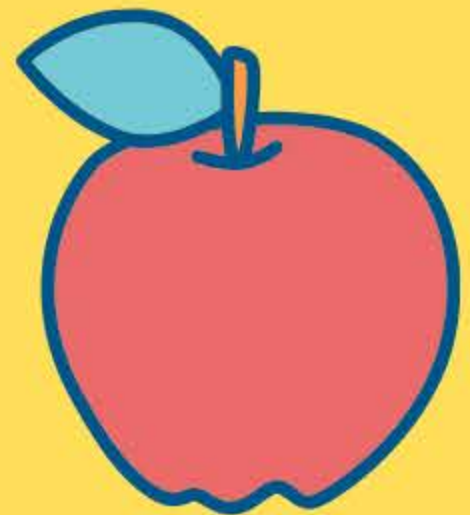
- The **value** of education
- Their **expectations** for educational achievement



## Family Academic Socialization:

- **Shapes** behaviors that have implications for student's success
- Associated with more **positive learning** and behavioral outcomes
- **Strengthens** Family- School partnerships

## Support Family Academic Socialization!



- **Communicate** to families the **WHY** of learning
- **Give** families a role in learning
- **Bring** families into creating learning experiences



Source: Dr. Steve  
Constantino